

MAJOR VAN EXCHANGE

NAMED AFTER: KATHY K.

VAN 2&1

4.87 MI | EASY

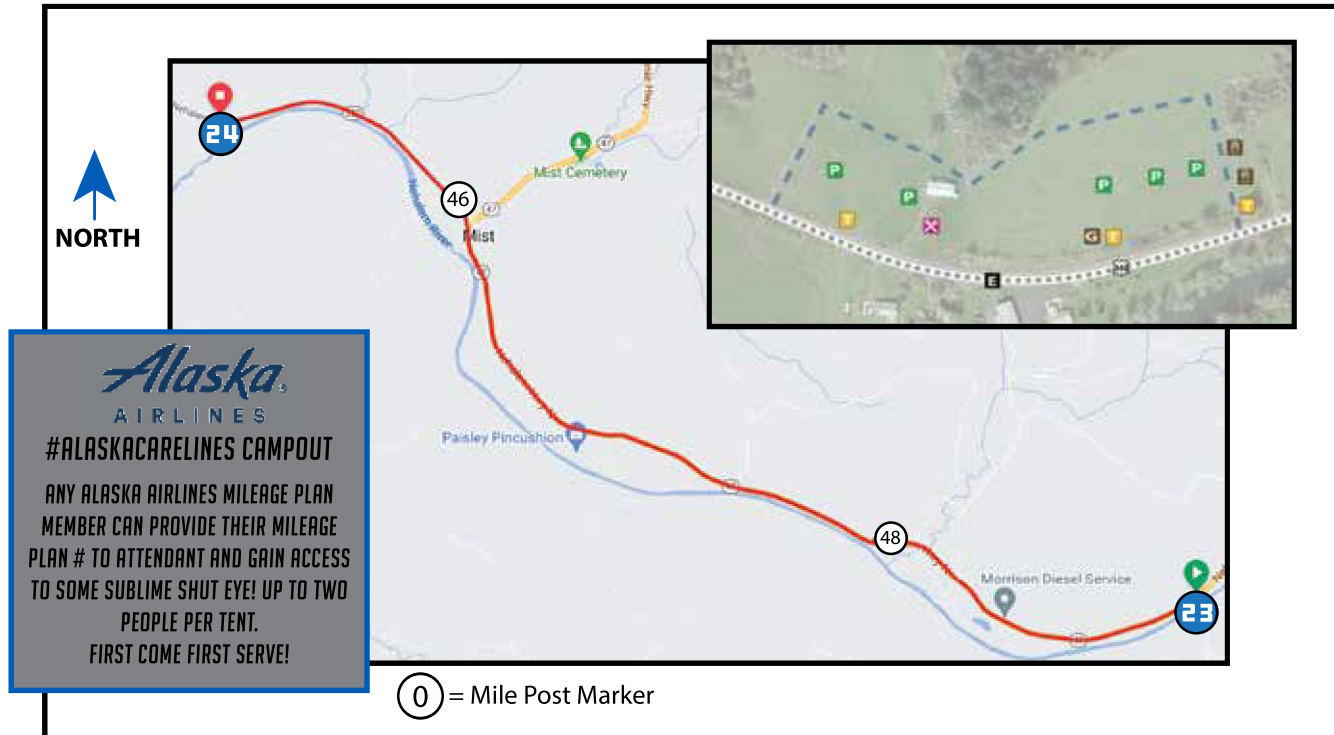


LEG DESCRIPTION: Flat terrain along Nehalem River and through pastoral setting on HWY 47 and HWY 202.

EXCH 24 ADDRESS: 13950 HWY 202 Birkenfeld, OR 97016 m.p. 44.9

GPS: 46.002792, -123.278399

NOTES: Cell phone coverage unreliable until after Leg 32.



DIRECTIONS FROM EXCH 23 TO EXCH 24

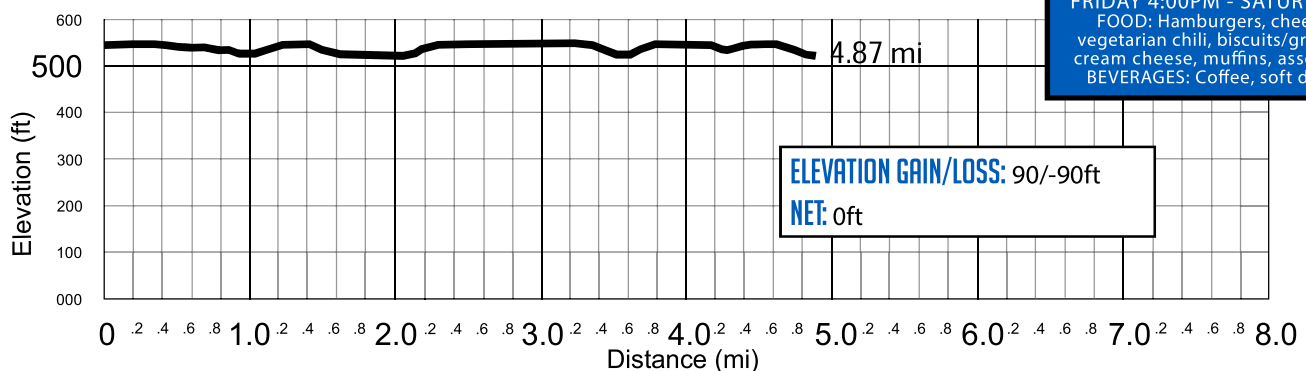
- 0.00 Exchange 23 (Natal Grange)
- ↑ 0.83 Country Museum on left
- ↑ 1.15 Battle Creek Bridge
- ↑ 3.55 Nehalem Valley Automotive
- ↑ 3.66 Continue on HWY 202
- 4.87 Exchange 24 (Mist - HWY 202)

EXCHANGE NOTES

Parking: In two large fields along right side of the road.
 Do not drop racer off near exchange (causes immediate back-up).
 Exchange 24 sleeping only permitted in designated, roped off sleeping areas. Tents ARE allowed at Exchange 24. **Race DQ if found sleeping on ground next to vehicle!**
 Provisions: Course Fundraiser and first aid
 Fuel: No (nearest fuel- 13.2 miles north on HWY 30)
 All teammates outside of vehicle MUST utilize a flashlight/headlamp or front & back flashers as a spectator walking in grass field.
 Vans exiting- put on emergency flashers to alert parking volunteers to direct you to exit.
 Turn off flashers when coming back onto road.



Highly encouraged to wear high visibility clothing (no dark colors), and for non-participating teammates outside van to wear a reflective vest & LED flasher (6pm-9am).



COURSE FUNDRAISER

VERNONIA HS EQUESTRIAN

FRIDAY 4:00PM - SATURDAY 9:00AM

FOOD: Hamburgers, cheeseburgers, vegetarian chili, biscuits/gravy, bagels & cream cheese, muffins, assorted snacks.
 BEVERAGES: Coffee, soft drinks, water